

## Helen Keating Ott Award for Outstanding Contribution to Children's Literature

*A person or organization is selected and honored for making significant contribution in promoting high moral and ethical values through children's literature. In addition to librarians, educators or clergy, appropriate nominees are authors, illustrators, editors or publishers of children's books.*

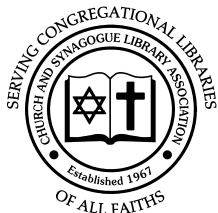
\*\*\*

## Pat Tabler Memorial Scholarship Award

*CSLA recognizes a librarian who has shown initiative and creativity in starting a new, or renewing, a congregational library.*

*Self-nominations are appropriate.*

*The librarian has, over the past year, supervised a growing and developing library that is accessible and attractive to patrons.*



## Nominations

A nomination for an award may be made by anyone except the proposed awardee. (Only the Pat Tabler Memorial Scholarship Award is eligible for self-nomination.) It should include the name, address, and telephone number of the nominee plus the church or synagogue relationship where appropriate. When an organization is nominated, the name of a contact person should be included.

A detailed description of the reasons for the nomination should be given, accompanied by documentary evidence of accomplishment. The nominator should give his or her name, address, telephone number, e-mail address and a brief explanation of his or her knowledge of the individual's efforts. Elements of creativity and innovation will be given high priority

Awardees are chosen by the CSLA Executive Board upon the recommendation of the Awards Committee from among nominations received by the Committee. All persons are eligible for nomination except current Executive Board members. In the event there are no outstanding nominations in any category, the award will not be made.

Contact CSLA for the official Nomination Form:  
**Church and Synagogue Library Association**

10157 SW Barbur Blvd. #102C  
Portland OR 97219  
503-244-6919  
1-800-LIB-CSLA (1-800-542-2752)  
csla@worldaccessnet.com

A

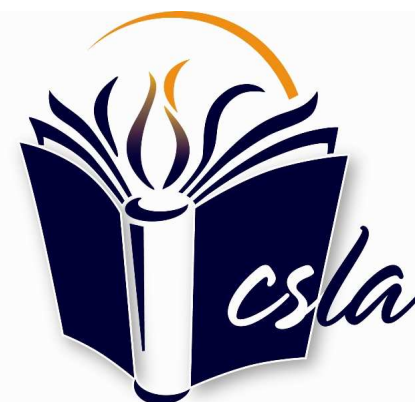
w

a

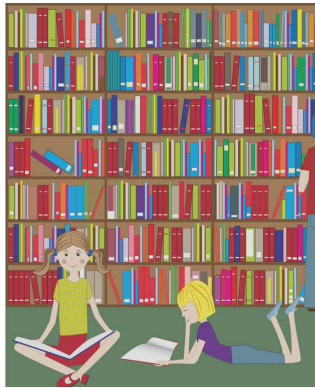
r

d

s



**CHURCH AND SYNAGOGUE  
LIBRARY ASSOCIATION**



## Outstanding Congregational Library

CSLA honors a church or synagogue library which has responded in creative and innovative ways to the library's mission of reaching and serving members of the congregation and/or the wider community.

The library may -

*Enjoy frequent use by all ages of church of synagogue membership*

*Be accessible and attractive with some elements of uniqueness*

*Have up-to-date and varied materials*

*Have resources other than books*

*Serve all branches of the sponsoring church or synagogue*

*Evidence growth and development in size and use*

## Outstanding Contribution to Congregational Libraries

This award is given to a person or institution that has provided inspiration, guidance, leadership or resources to enrich the field of church or synagogue libraries.

The individual or institution may -

*Provide an unusual extension of library services in the community*

*Develop special services or materials*

*Promote and develop congregational library workshops, material or literature*

*Promote libraries in a community or area*

*Promote libraries through a denomination or an interdenominational or interfaith group*



## Outstanding Congregational Librarian

CSLA recognizes a church or synagogue librarian who exhibits distinguished service to his or her congregation and/or community through devotion to the ministry of congregational librarianship.

The librarian may -

*Make creative use of available resources or facilities*

*Evidence willingness to learn and share knowledge with others*

*Meet needs of different age groups*

*Evidence willingness to accept additional responsibilities (e.g., archives, art, music)*

*Promote the library creatively to a wide variety of patrons*

*Work successfully with a committee or library board*